



Quick Guide

Guide sommaire / Kurzfleifaden
Guía rápida / Guida rapida



disklavier™

Mark IV/ PRO Series



disklavier™

Mark IV / PRO Series

Quick Guide

Chapter 1

Basic Operations 3

Operating the Pocket Controller	3
Turning the Disklavier On	4
Turning the Disklavier Off (Standby Mode)	6
Shutting Down the Disklavier	7

Chapter 2

Basic Playback 8

Types of Playable Software	8
Song Libraries and Their Contents	9
Playing Back the Sample Songs in the Song Library	10
Adjusting the Overall Volume	12
Selecting a Song	12
Searching Forward and Backward in a Song	15

Chapter 3

Basic Piano Playing 16

Playing the Acoustic Piano (Acoustic Mode)	16
Playing the Digital Piano (Quiet Mode)	16
Using Headphones (Headphone Mode)	17
Adjusting the Volume in Quiet/Headphone Mode	18
Selecting the Voice in Quiet/Headphone Mode	19

Chapter 1

Basic Operations

◆ Before operating the Disklavier

Be sure to set up the Disklavier and the Pocket Controller. (→ pg. 11 “Setting Up the Disklavier” and pg. 15 “Preparing the Pocket Controller” in “Advanced Operating Manual”)

Convention

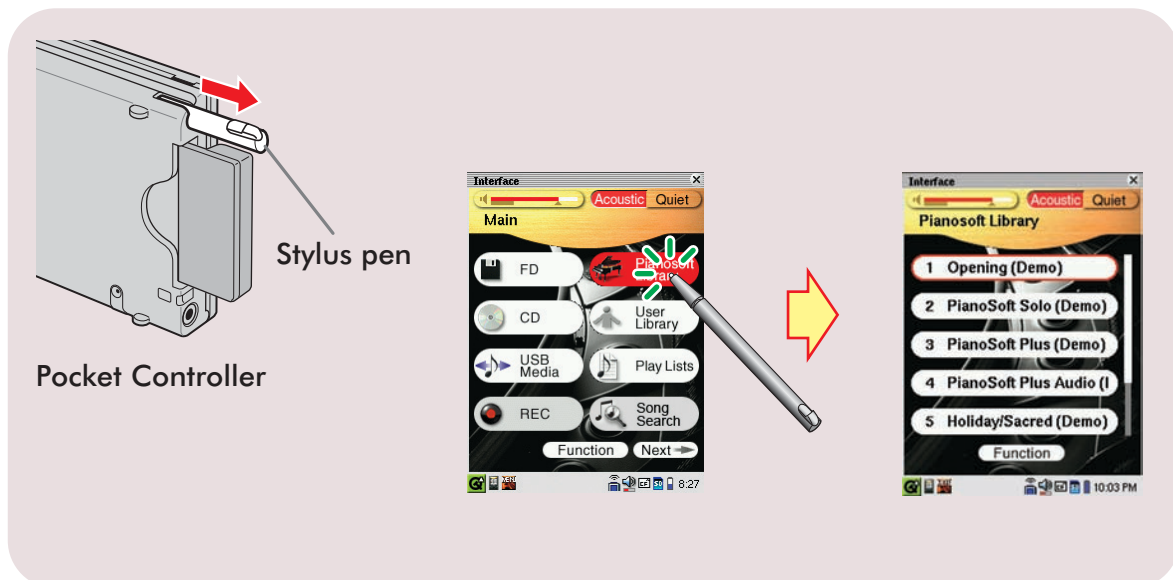
In the following procedures, the buttons and controls mentioned are of the Pocket Controller unless otherwise noted.

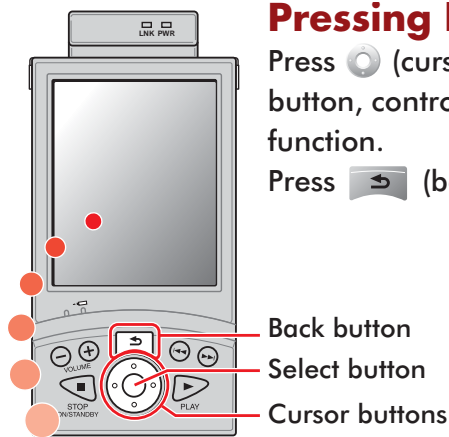
Operating the Pocket Controller

You can operate the Pocket Controller by either tapping items on the touch screen with the supplied stylus pen, or by pressing the buttons on the Pocket Controller.

Tapping with the stylus pen

Touch an item (application icon, button, control, etc.) on the touch screen once to execute its function.

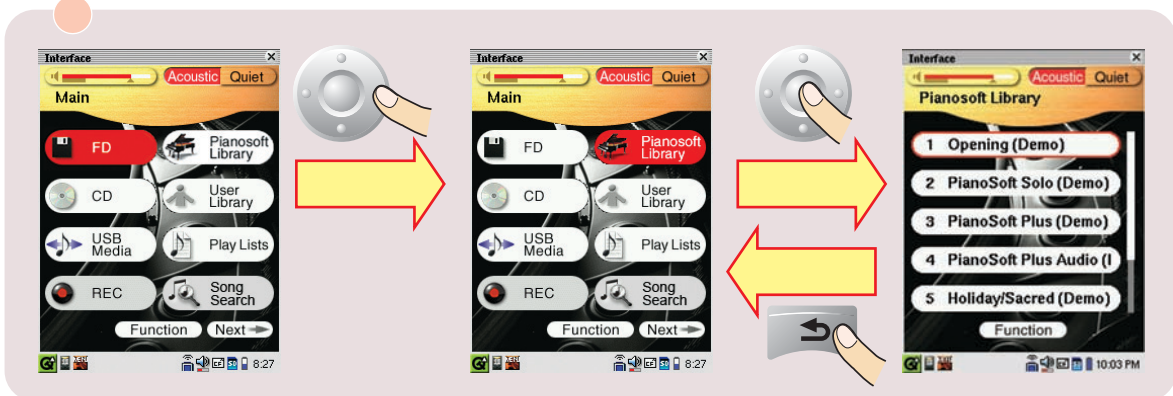




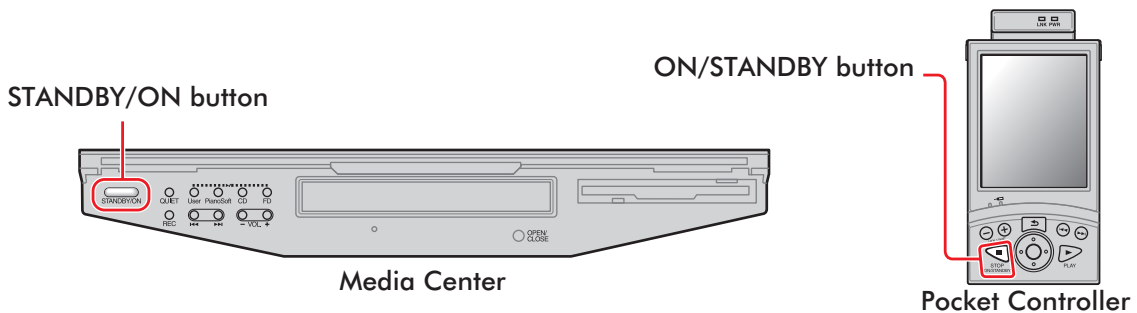
Pressing buttons

Press (cursor buttons) to move the focus on the desired icon, button, control, etc., and then press (select button) to execute its function.

Press (back button) to return to the previous screen.



Turning the Disklavier On




- 1 Confirm that the power cable of the Power Supply Unit is connected to an AC wall outlet.
- 2 Press the [ON] side of the [POWER] switch on the Monitor speakers. (→ pg. 10 in "Advanced Operating Manual")

Note: This step is necessary only for models supplied with the Monitor speakers.

3 Press the [ON] side of the [MAINS] switch on the Power Supply Unit. (→ pg. 5 in “Advanced Operating Manual”)

4 Press the [ON] side of the [MAINS] switch on the I/O Center. (→ pg. 4 in “Advanced Operating Manual”)

 on the Media Center starts flashing green.

Wait until  on the Media Center stops flashing and dimly lights green, and then go to step 5.

Note: This may take several minutes.

5 Press .

The Disklavier is turned on and the [Main] screen appears.



The touch screen changes as follows:



[Main] screen

Note: This may take approximately two minutes.

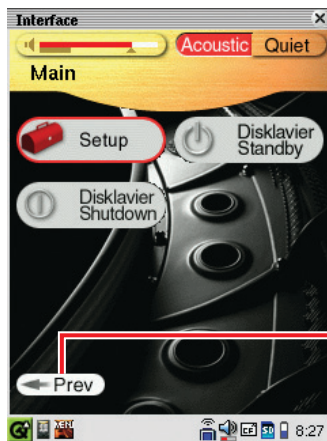
Note: When turning the Disklavier back on after shutting down, be sure to wait 10 seconds before doing so.

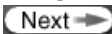
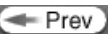
Tip: Pressing  on the Media Center also turns the Disklavier on. In such a case, be sure to press  to turn on the Pocket Controller as well.

Turning the Disklavier Off (Standby Mode)

After daily use, be sure to turn the Disklavier off by following the procedure below. In Standby mode, the piano is in effect turned off. However, electrically it is in a state in which a small quantity of power is being consumed.

- 1 Tap on **Next**  repeatedly in the [Main] screen until the following screen appears.



The [Main] screen consists of three screens. Tap on **Next**  or **Prev**  to switch the screen.

Tip: To return to the [Main] screen, press  repeatedly until the [Main] screen appears.

- 2 Tap on **Disklavier Standby** .

The Pocket Controller is turned off and  on the Media Center lights dimly green.

Tip: Pressing  on the Media Center also turns the Disklavier off.

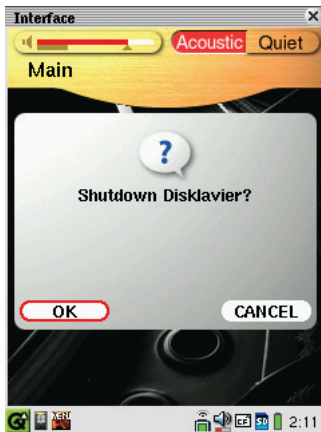
Note: Be sure NOT to disconnect the power cable from the AC wall outlet in standby mode.

Shutting Down the Disklavier

Before disconnecting the power cable from the AC wall outlet, be sure to shut down the Disklavier by following the procedure below.

1 Tap on **Next** in the [Main] screen, if necessary.

2 Tap on **Disklavier Shutdown**.



3 Tap on **OK**.

The Pocket Controller turns off and **STANDBY/ON** on the Media Center goes out.

Tip: Holding down **STANDBY/ON** on the Media Center until the button starts flashing will also shut down the Disklavier.

Note: When turning the Disklavier back on, be sure to wait for 10 seconds before doing so.

◆ About the [MAINS] switches

The [MAINS] switches (on both the Power Supply Unit and the I/O Center) only need to be switched off when you are not going to use the Disklavier for a long period of time. It is effectively the same as disconnecting the power cable from the AC wall outlet. For daily use, you can keep the [MAINS] switches on, and turn the Disklavier off by following the procedure "Turning the Disklavier Off (Standby mode)" on pg. 6.

Chapter 2

Basic Playback



The Disklavier can play back piano songs contained in PianoSoft, PianoSoft·Plus, PianoSoft·PlusAudio, and PianoSoft·PlusGraphics software. Furthermore, audio/MIDI CDs of other manufacturer's and standard audio CDs, as well as piano songs that you recorded in the song library* of the Disklavier can be played back.

* For details on organizing songs with the internal song libraries, see "Song Libraries and Their Contents" on pg. 9.

Note: PianoSoft·PlusAudio CDs may not be available in some countries.

Types of Playable Software

PianoSoft and PianoSoft·Plus floppy disks

When piano songs such as those contained in PianoSoft and PianoSoft·Plus floppy disks are played back on the Disklavier, the piano parts are actually played by the Disklavier keyboard, and the keys move up and down as though they were being played by an invisible performer. The ensemble parts, (contained in PianoSoft·Plus software), are played by the internal XG tone generator and are heard from the Monitor speakers**.




PianoSoft·PlusAudio and audio/MIDI CDs of other manufacturer's

PianoSoft·PlusAudio songs and other manufacturer's audio/MIDI songs are recorded using two channels, an analog MIDI channel for the piano parts and an audio channel for instrumentals and vocals. When they are played back on the Disklavier, the piano parts are played by the Disklavier keyboard as with PianoSoft and PianoSoft·Plus songs, and all other instrumental and vocal parts are heard from the Monitor speakers** just like a normal stereo system.



PianoSoft·PlusGraphics software

When piano songs contained in PianoSoft·PlusGraphics software are played back on the Disklavier, piano parts are actually played by the Disklavier keyboard, and the ensemble parts are played by the internal XG tone generator and are heard from the Monitor speakers**. Furthermore, synchronized pictures and text information are also output from the VIDEO OUT jack on the I/O Center. To play back a PianoSoft·PlusGraphics song, select the song with  in the song list screen.



SmartPianoSoft disks and CDs

For details, see “Adding Disklavier Accompaniment to Commercial CD Songs (PianoSmart)” on pg. 38 in “Advanced Operating Manual”.



Standard audio CDs

Standard audio CDs contain two audio channels (R and L), and are both heard from the Monitor speakers** just like a normal stereo system. In other words, the Disklavier can be used to play CDs in place of a stereo system.

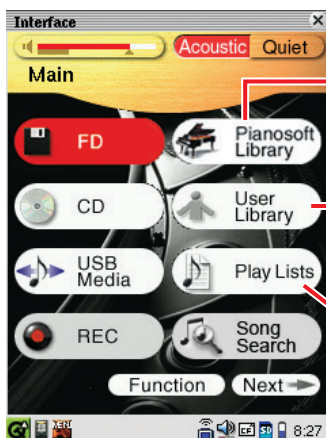


**Only for models supplied with the Monitor speakers.

Song Libraries and Their Contents

Songs contained in software floppy disks/CDs, or those you have recorded on the Disklavier, purchased from DisklavierMusicStore, or copied from a personal computer can be copied into the internal song library (named [PianoSoft Library], [User Library], [CD Library], [Download Library], and [From/To PC]) eliminating the trouble of changing floppy disks/CDs each time you want to listen to songs on a different disk. (→ pg. 61 “Creating a Song Library” in “Advanced Operating Manual”)

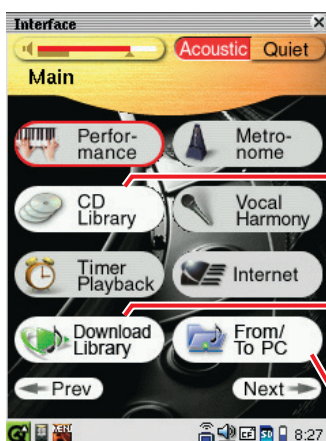
Song libraries on the [Main] screens



Prepared for piano songs that are copied from PianoSoft/ PianoSoft-Plus software floppy disks, PianoSoft-PlusAudio CDs, PianoSoft-PlusGraphics, or SmartPianoSoft.

Prepared for piano songs that are recorded on the Disklavier.

Prepared for songs that are copied from removable media or other libraries to playback in your desired order.



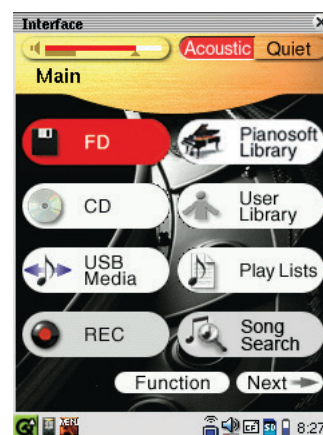
Prepared for songs that are copied from standard audio CDs.

Prepared for songs purchased from DisklavierMusicStore.

Prepared for songs copied from a personal computer.

Playing Back the Sample Songs in the Song Library

1 Turn the Disklavier on. (→ pg. 4)



[Main] screen

2 Tap on  in the [Main] screen.

Albums in the current source*



Album list screen

* For details on source selection, see "Selecting a Song" (→ pg. 12).

3 Tap on the desired album.

Songs in the current album*



Song list screen

* For details on album selection, see "Selecting a Song" (→ pg. 12).

4 Tap on the desired song.



[Song] screen


5 Press to start playback.

To stop playback, press .

Tip: Pressing  on the Media Center corresponding to the current playing source stops playback.

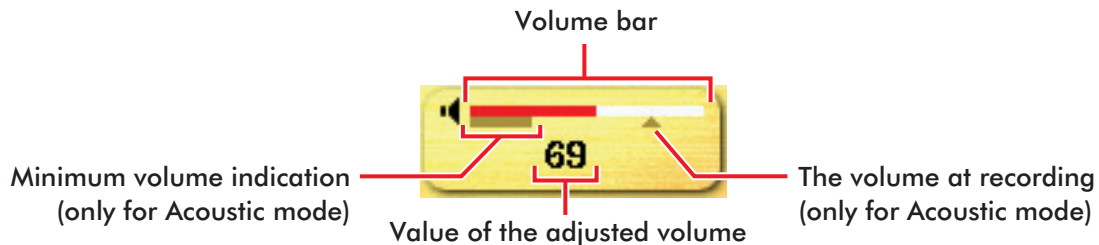
To select the next song, press .

To select the previous song, press .

Tip: To show the current playing song when the screen shows other than the current song screen, press .

Adjusting the Overall Volume

Press **−** **+** to adjust the overall volume.



Note: During Acoustic mode, the overall volume cannot be effectively turned down less than the minimum volume indication. For details of the Acoustic Mode, see “Playing the Acoustic Piano (Acoustic Mode)” (→ pg. 16).

Selecting a Song

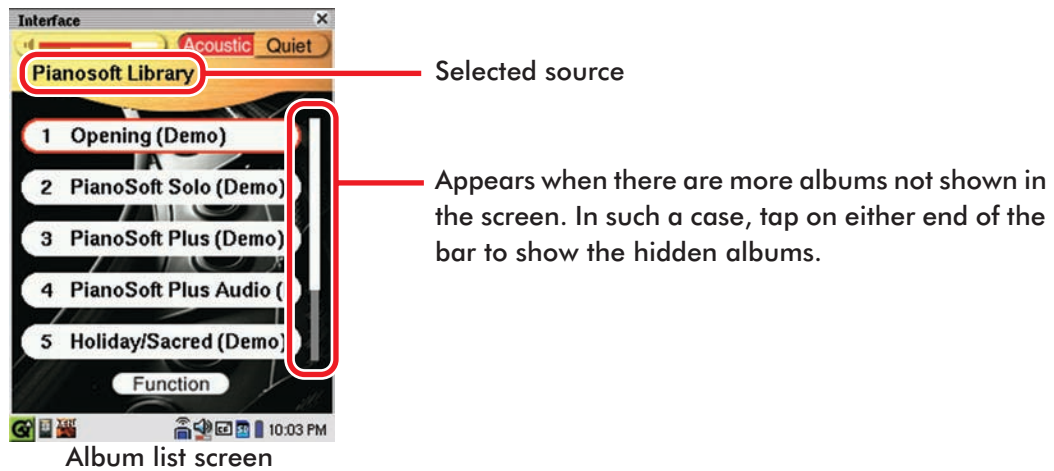
1 When you play back a song on a floppy disk, a CD, or a USB medium, load the relevant medium into their respective drives or port on the Media Center. (→ pg. 2, 20 in “Advanced Operating Manual”)



[Main] screens

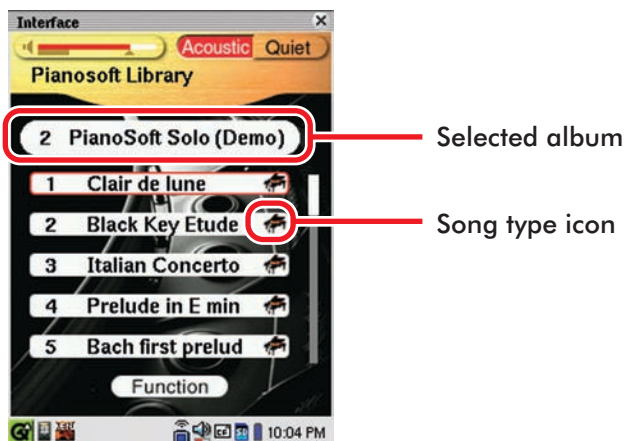
2 Tap on the desired source* in the [Main] screen.

* In this manual, we call each removable medium (floppy disk, CD, and USB flash memory, etc.) and the internal song library as "source".



Tip: Pressing  on the Media Center also selects the source, and then starts playback.

3 Tap on the desired album in the album list screen.



Song list screen

Song type icons

 : **PianoSoft/PianoSoft-Plus**

(→ pg. 8 “Types of Playable Software”)

 : **PianoSoft-PlusAudio/User recorded audio and MIDI song**

(→ pg. 8 “Types of Playable Software” and pg. 57 “Recording a Song as MIDI and Audio Data” in “Advanced Operating Manual”)

 : **PianoSoft-PlusGraphics**

(→ pg. 8 “Types of Playable Software”)

 : **SmartPianoSoft**

(→ pg. 38 “Adding Disklavier Accompaniment to Commercial CD Songs (PianoSmart)” in “Advanced Operating Manual”)

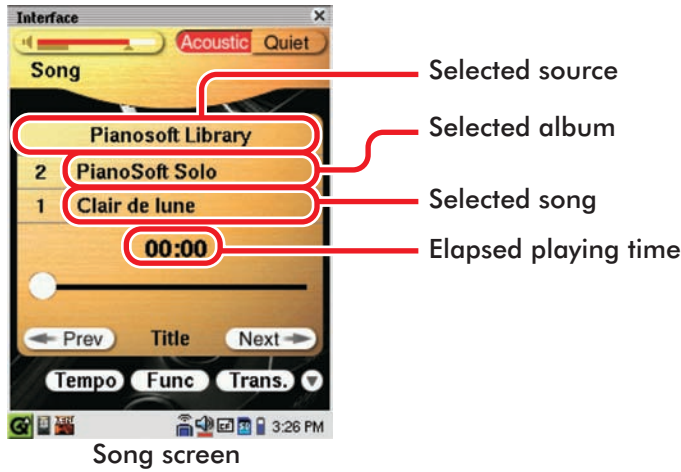
 : **SmartKey**

(→ pg. 37 “SmartKey™ Playback” in “Advanced Operating Manual”)



 : **User recorded audio song**




(→ pg. 56 “Record a Song as Audio Data” and pg. 59 “Re-recording an Existing Song as Audio Data” in “Advanced Operating Manual”)

4 Tap on the desired song in the song list screen.

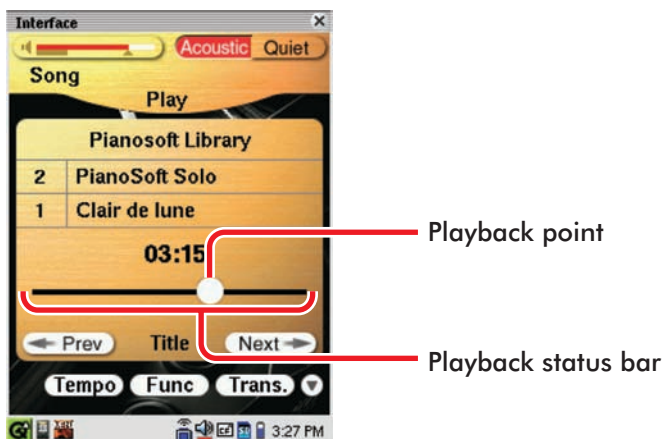


Searching Forward and Backward in a Song

During playback, hold   down until the desired point in a song is located, and then release the button. Playback starts.

In stop mode, hold   down until the desired point in a song is located, and then press . Playback starts.

Tip: Tapping on the desired point on the playback status bar starts playback from that point.



Basic Piano Playing

The Disklavier is a versatile instrument offering various functions that integrate innovative technologies, but let's start with the most basic use of the piano: playing the keyboard.

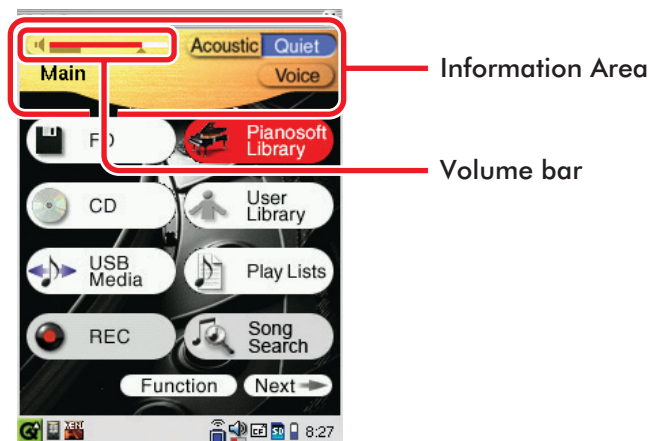
Playing the Acoustic Piano (Acoustic Mode)

Play the keyboard as you would play any acoustic piano. You do not need to "turn the Disklavier on."

Playing the Digital Piano (Quiet Mode)

Put the Disklavier in Quiet Mode when you want to play the keyboard more quietly or more privately than on the acoustic piano. When Quiet Mode is activated, you are essentially playing the digital piano. Since the played sound is heard from the Monitor speakers*, you can adjust the volume to your preference.

1 Turn the Disklavier on. (→ pg. 4)



2 Tap on **Quiet** in the Information Area to activate the Quiet Mode.

The color of the button and the volume bar turns to blue (**Quiet**).

Tip: Pressing  on the Media Center also activates the Quiet Mode.

3 Play the Disklavier.

You will hear the sound of the digital piano from the Monitor speakers*.

To disengage Quiet Mode, tap on **Acoustic** in the Information Area. The color of the button and the volume bar turns to red (**Acoustic**).

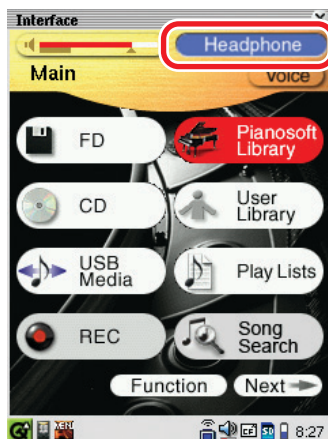
Tip: Pressing  on the Media Center also inactivates the Quiet Mode.

* Only for models supplied with the Monitor speakers.

Using Headphones (Headphone Mode)

1 Turn the Disklavier on. (→ pg. 4)

2 Connect the supplied stereo headphones to the PHONES jack on the bottom of the Media Center. (→ pg. 2 in "Advanced Operating Manual")



Headphone mode indication

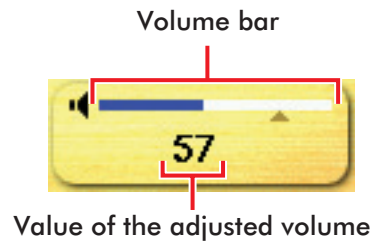
3 Play the Disklavier.

The Acoustic mode is silenced and the digital piano sound is heard only from the connected headphones.

Note: Two sets of headphones can be connected simultaneously. In this case, the two headphones should be the same model.

Adjusting the Volume in Quiet/Headphone Mode

Press   to adjust the volume.



Selecting the Voice in Quiet/Headphone Mode

In Quiet or Headphone mode, you can select the digital piano sound (voice) that expresses various instruments to your preference.

1 Tap on **Voice** in the Information Area.



[Voice] screen

Tap on the either end of the bar to show the hidden voices.

2 Tap on the desired voice.

3 Tap on **Exit** to clear the [Voice] screen.



YAMAHA CORPORATION
P.O.Box 1, Hamamatsu, 430-8650 Japan

Copyright © 2010 by Yamaha Corporation
This document is printed on chlorine free (ECF) paper.