

## VXS3F VXS3FT Revit Family

This operation manual will explain how to set VXS3F, VXS3FT “Family” in a “Project.”

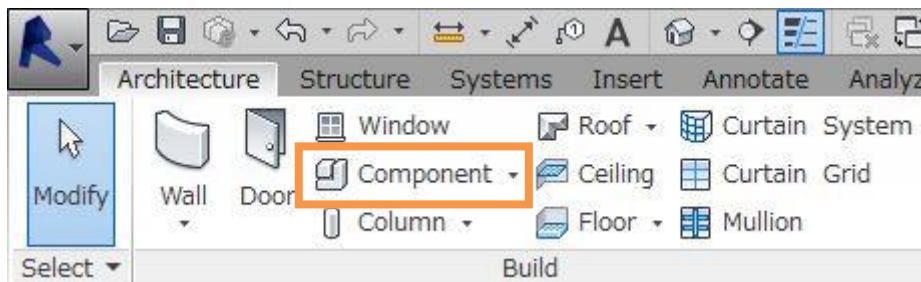
VXS3F and VXS3FT have a total of four types of “Family” respectively.

VXS3F-wall.rfa and VXS3FT-wall.rfa are the “Family” for the surface mount while VXS3F-ceiling.rfa and VXS3FT-ceiling.rfa are the “Family” for ceiling mount. These “Family” are created by Revit 2016 version.

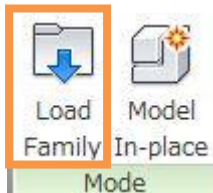
### To set Family for surface mount (VXS3F-wall.rfa, VXS3FT-wall.rfa)

1) Load “Family”.

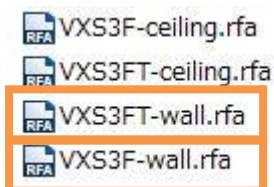
Click “Architecture”, then “Component”.



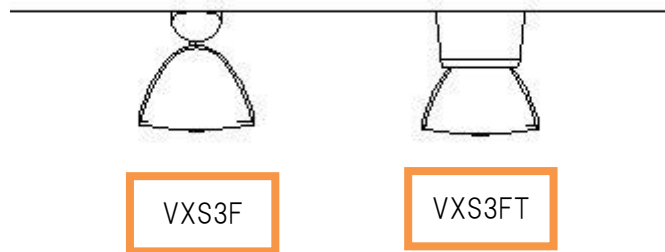
Click “Load Family” from the “Mode” panel.



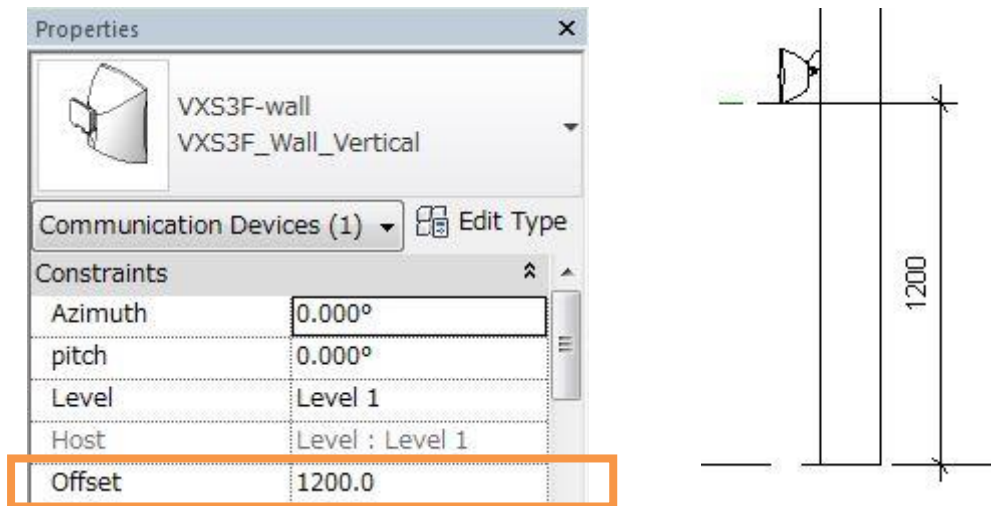
Select either VXS3F-wall or VXS3FT-wall.



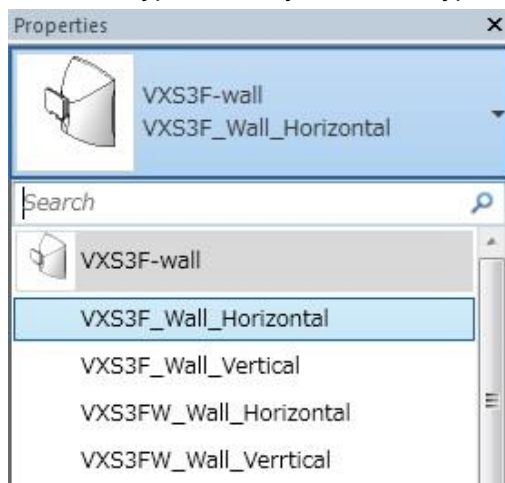
2) Place the VXS3F/VXS3FT on a wall

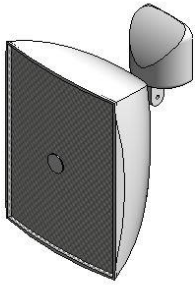


3) Input the “Offset” value in Properties to adjust the placement height.

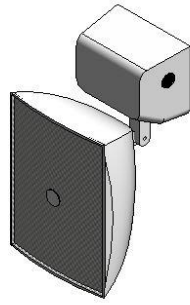


4) There are four types of “Family” for surface mount.  
Select the type of family from the “Type Selector”.

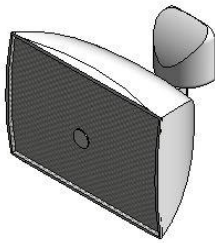




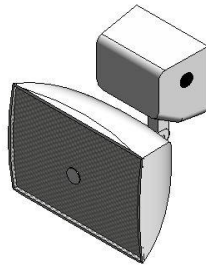
VXS3FW\_Wall\_Vertical



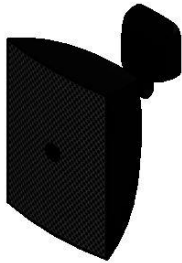
VXS3FTW\_Wall\_Vertical



VXS3FW\_Wall\_Horizontal



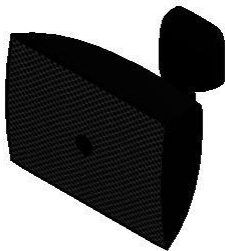
VXS3FTW\_Wall\_Horizontal



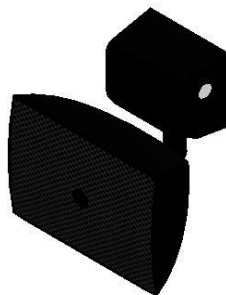
VXS3F\_Wall\_Vertical



VXS3FT\_Wall\_Vertical

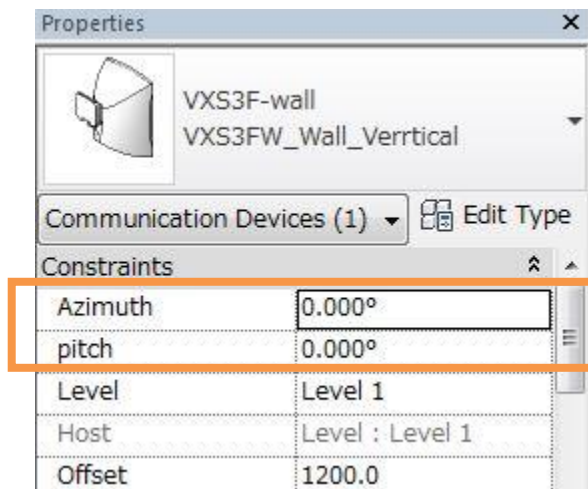


VXS3F\_Wall\_Horizontal

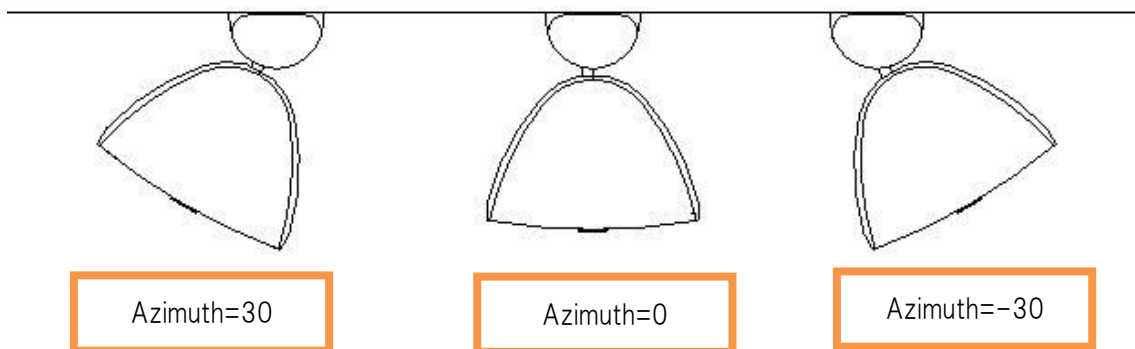


VXS3FT\_Wall\_Horizontal

5) Input the “Azimuth” and “Pitch” values in Properties to adjust the angle.

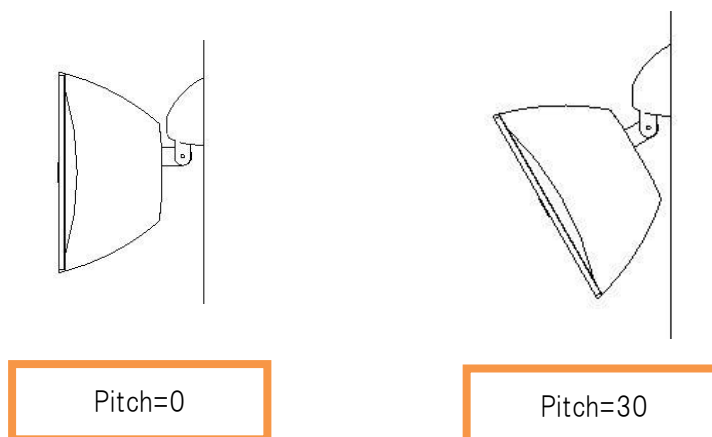


For “Azimuth”, input a value to adjust the horizontal rotation angle.

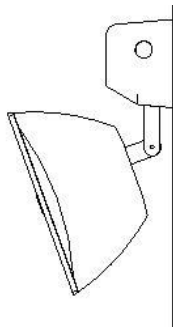


For “Pitch”, input a value to adjust the vertical rotation angle.

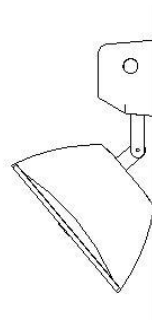
For VXS3F\_Wall\_Vertical, you can input a value between 0° to 50°, or 0° to 30°. See the Installation Guide for details.



For VXS3FT\_Wall\_Vertical, you can input a value between 30° to 50°, or 20° to 30°. See the Installation Guide for details.

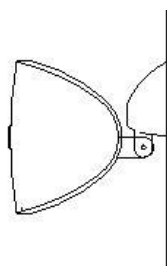


Pitch=20

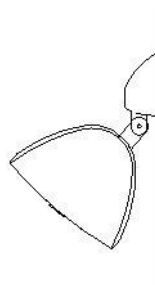


Pitch=40

For VXS3F\_Wall\_Horizontal, you can input a value between 0° to 70°, or 0° to 50°. See the Installation Guide for more details.

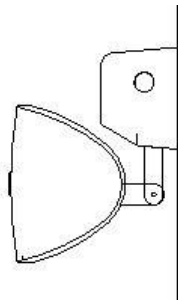


Pitch=0

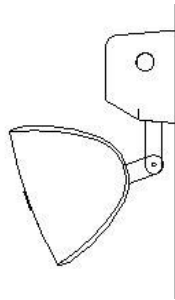


Pitch=50

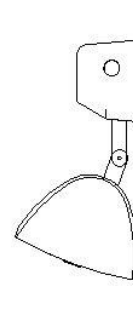
For VXS3FT\_Wall\_Horizontal, you can input one of the values from the following: 20° to 70°, 0°, and 0° to 50°. See the Installation Guide for more details.



Pitch=0



Pitch=20



Pitch=70

- 6) For the specification of the speaker, check from the “Type Properties”.

**Type Properties**

Family: VXS3F-wall Load...

Type: VXS3FW\_Wall\_Verrtical Duplicate...

Rename...

Type Parameters

Parameter	Value
<b>Dimensions</b>	
Width	184mm(speaker only),184mm(with
Height	130mm(speaker only),130mm(with
Depth	94mm(speaker only),134mm(with br
<b>Identity Data</b>	
Manufacturer	Yamaha
Model	VXS3F
IQ Category	Loudspeakers
Manufacturer URL	<a href="https://www.yamaha.com">https://www.yamaha.com</a>
Product Page URL	<a href="https://www.yamaha.com/proaudio/">https://www.yamaha.com/proaudio/</a>
Product Documentation Link	<a href="https://www.yamaha.com/proaudio/">https://www.yamaha.com/proaudio/</a>
A&E Specification	The speaker shall be of surface-mou
<b>Other</b>	
Sensitivity	86
Power Handling	40
Impedance	8
Coverage Horizontal	150
Coverage Vertical	160
70V Taps	-
100V Taps	-
Regulatory Compliance	-
Net Weight	1.0kg (speaker only),1.1kg (with bra

\*Note!

The material shown in the “Material and Finishes” in “Type Properties” are different from the material of the actual product.

Do not change the values and settings in the “Parameters” shown in “Structural” as they are the Parameters to change the placement of the Metal fittings when switching the speaker between vertical and horizontal.

Materials and Finishes	
body	ABS-white
cover	perforated aluminum-white
Structural	
mf-p	<input checked="" type="checkbox"/>
mf-s	<input type="checkbox"/>
dis	-14.9

### To set Family for ceiling mount (VXS3F-ceiling.rfa, VXS3F-ceiling.rfa)

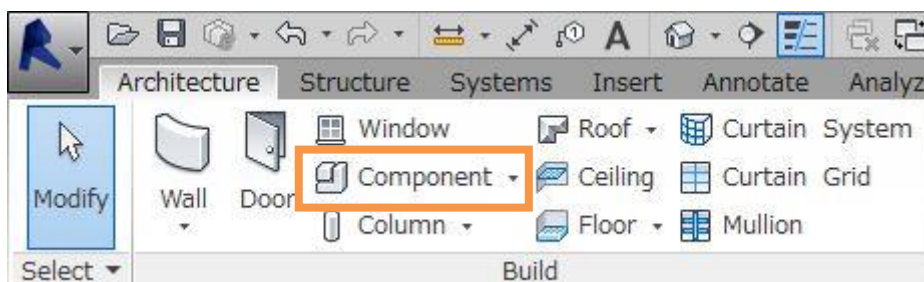
1) Load “Family”.

Note!

The “Family” for ceiling cannot be placed without a ceiling.

Please set the reflected ceiling plan.

Click “Architecture”, then “Component”.

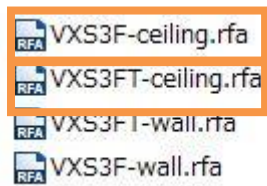


Click “Load Family” from the “Mode” panel.

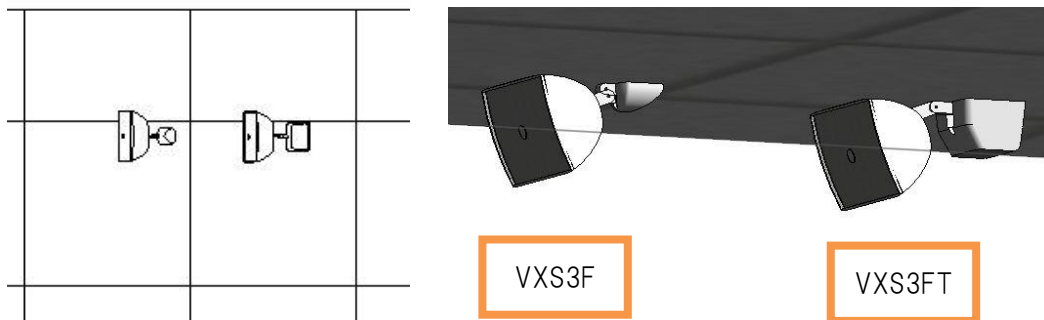




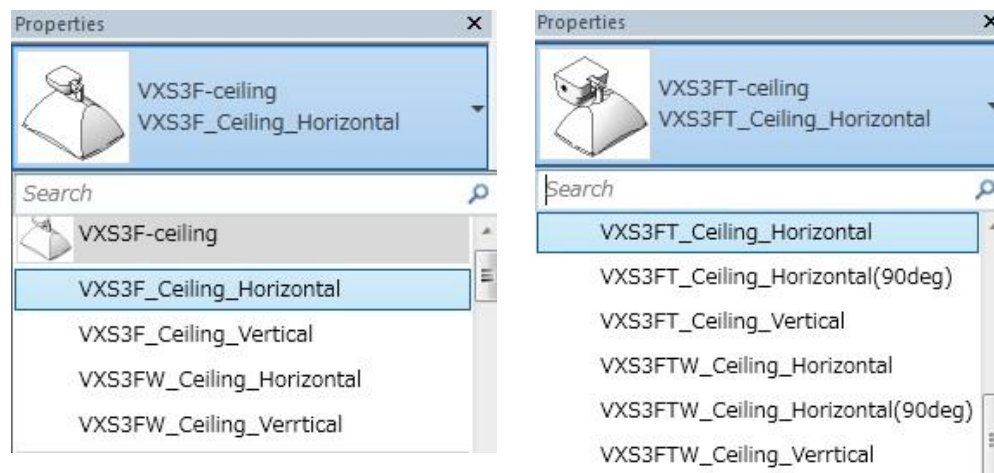
Select either VXS3F-ceiling or VXS3FT-ceiling.



2) Place VXS3F/VXS3FT on a ceiling.



3) VXS3F has four types and VXS3FT has six types of “Family” for ceiling mount. Select the type of family from the “Type Selector”.



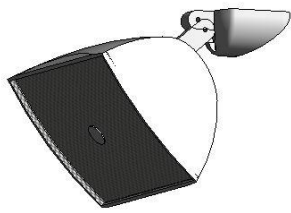




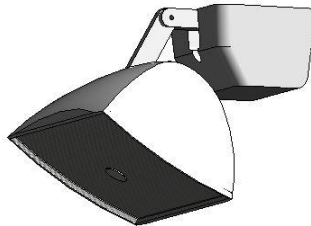
VXS3FW\_ceiling\_Vertical



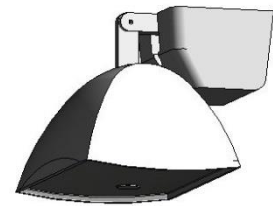
VXS3FTW\_ceiling\_Vertical



VXS3FW\_ceiling\_Horizontal



VXS3FTW\_ceiling\_Horizontal



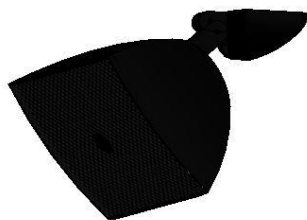
VXS3FTW\_ceiling\_Horizontal(90deg)



VXS3F\_ceiling\_Vertical



VXS3FT\_ceiling\_Vertical



VXS3F\_ceiling\_Horizontal

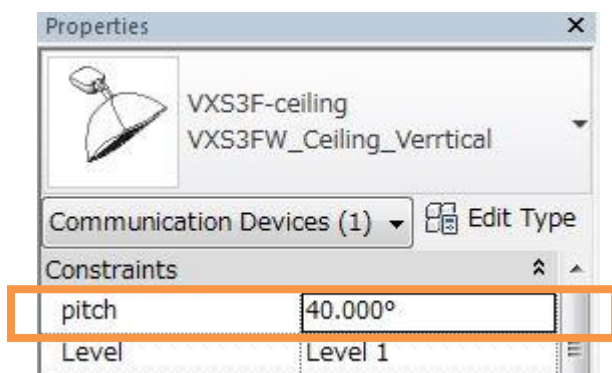


VXS3FT\_ceiling\_Horizontal



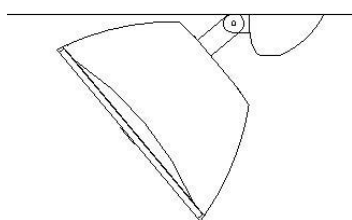
VXS3FT\_ceiling\_Horizontal(90deg)

4) Input the “Pitch” value in Properties to adjust the angle.

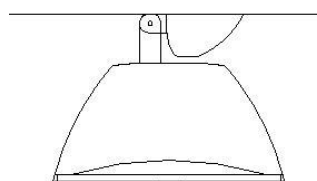


For “Pitch”, input the value to adjust the vertical rotation angle.

For VXS3F\_ceiling\_Vertical, you can input a value between 40° to 90°. See the Installation Guide for more details.

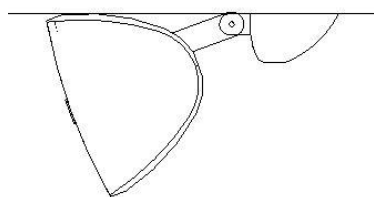


Pitch=40

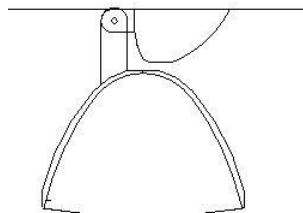


Pitch=90

For VXS3F\_ceiling\_Horizontal, you can input a value between 20° to 90°. See the Installation Guide for more details.

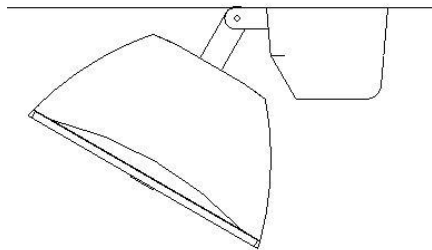


Pitch=20

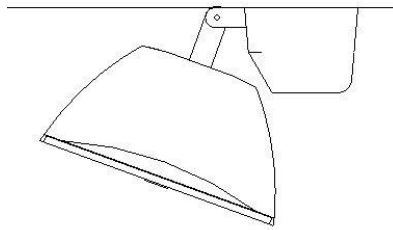


Pitch=90

For VXS3FT\_ceiling\_Vertical, you can input a value between 60° to 70°. See the Installation Guide for more details.

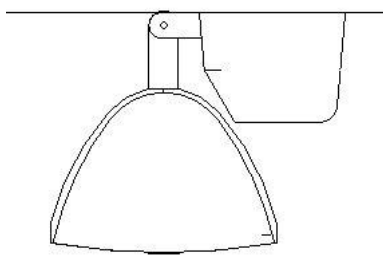


Pitch=60



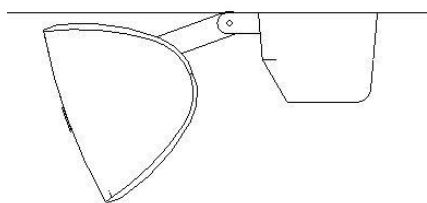
Pitch=70

For VXS3FT\_ceiling\_Horizontal (90deg), you can only input 90°. See the Installation Guide for more details.

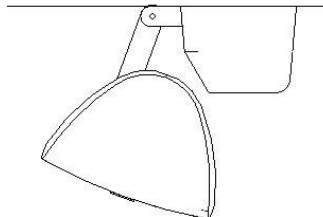


Pitch=90

For VXS3FT\_ceiling\_Horizontal, you can input a value between 20° to 70°. See the Installation Guide for more details.



Pitch=20



Pitch=70

- 5) For the specification of the speaker, check from the “Type Properties.”

**Type Properties**

Family:  Load...

Type:  Duplicate... Rename...

Type Parameters

Parameter	Value
<b>Dimensions</b>	
Width	184mm(speaker only),184mm(with
Height	130mm(speaker only),130mm(with
Depth	94mm(speaker only),134mm(with br
<b>Identity Data</b>	
Manufacturer	Yamaha
Model	VXS3FW
IQ Category	Loudspeakers
Manufacturer URL	<a href="https://www.yamaha.com">https://www.yamaha.com</a>
Product Page URL	<a href="https://www.yamaha.com/proaudio/">https://www.yamaha.com/proaudio/</a>
Product Documentation Link	<a href="https://www.yamaha.com/proaudio/">https://www.yamaha.com/proaudio/</a>
A&E Specification	The speaker shall be of surface-mou
<b>Other</b>	
Sensitivity	86
Power Handling	40
Impedance	8
Coverage Horizontal	150
Coverage Vertical	160
70V Taps	-
100V Taps	-
Regulatory Compliance	-
Net Weight	1.0kg (speaker only),1.1kg (with bra

\*Note!

The material shown in the “Material and Finishes” in “Type Properties” are different from the material of the actual product.

Do not change the values and settings on the “Parameters” shown in “Structural” as they are the Parameters to change the placement of the Metal fittings when switching the speaker between vertical and horizontal.

Materials and Finishes		^
body	ABS-black	
cover	perforated aluminum-black	
knob	ABS-white	
Structural		^
mf-p	<input checked="" type="checkbox"/>	
mf-s	<input type="checkbox"/>	
mf-s90	<input type="checkbox"/>	
dis	0.0	